



- Features
- Tech
- News
- Towing
- Events
- Travel
- Videos
- Community
- Subscribe

Home » Events » The Trucks of Diesel Power Challenge 2008
[The Trucks of Diesel Power Challenge 2008](#)

By Trevor Reed
 photographer: The Diesel Power Staff, John Cappa

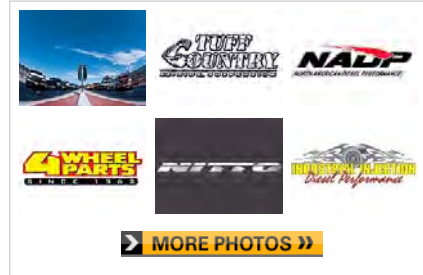
Dodge - Ram 2500 - Zip

Get no-obligation new diesel truck or car invoice pricing online.



Just when you thought the Diesel Power Challenge could not get any better, we had the biggest batch of competitors in the history of the event this year. One dozen ultramodified diesel trucks survived the journey to Salt Lake City, Utah. They hit the dragstrip, towed a 12,000-pound trailer, braved city streets during the fuel economy test, and tugged a sled in the middle of a howling rainstorm. You can read all about our event coverage in next month's issue of Diesel Power that hits newsstands on August 5th. For now, check out these competitors and see if you can guess who has what it takes to win the 2008 Diesel Power Challenge.

Related Photos



Related Articles

- [2001 Dodge Ram 2500 Cummins - Back To The Future](#)
A 21st-Century Dodge With A 1,237hp Cummins 12-Valve... [more](#)
- [Dodge Ram 2500 - My Blue Heaven](#)
Six-Speed Dream Dodge... [more](#)
- [2004 Diesel Hauler Shootout](#)
Check out whose got the toughest truck in our comparison between Ford, Dodge, and GMC in this... [more](#)
- [Diesel Engine OEM - OEM Shootout](#)
[more](#)

More Related Content

- [READ RELATED BLOGS](#)
- [SEE RELATED FORUM POSTS](#)
- [READ RELATED ARTICLES](#)



Al Babneau - Firth, Idaho
 '04 [Dodge](#) Ram 3500crew cab, shortbed, 4WD
 Engine: 5.9L Cummins
 Odometer: 104,322 miles
 Fuel Economy: 15 mpg
 Intake: Banks side flow
 Turbos: MPI twin turbos
 Exhaust: Custom 4-inch to 5-inch dual stacks in rear of bed
 Lift Pumps: Two Glacier Diesel 392s
 Fueling: Relentless Diesel Dual CP3s
 Injectors: F-1 Diesel Flux
 Intercooler: HTT
 Programming: Bully Dog PMT and TorqueDog; TST Power Max CR
 Nitrous Oxide: None
 Transmission: DTT
 Torque Converter: DTT
 Axle Ratios: 4.56
 Lockers: Stock



Suspension: Superlift 6-inch lift
 Wheels: Ultra
 Tires: 37x13.50R17 Toyo Open Country M/T
 What inspired your truck buildup?: "Don't know when to say when."



Rob Coddens - Eagle, Idaho

'07 [Chevy Silverado](#) 2500HDCrew Cab, shortbed, 4WD
 Engine: Duramax LBZ
 Odometer: 18,000 miles
 Fuel Economy: 20 mpg
 Intake: AFE
 Turbos: MPI twin turbos
 Exhaust: MBRP
 Lift Pump: PPE
 Fueling: Stock CP3
 Injectors: Stock
 Intercooler: Banks
 Programming: EFI Live by Adrenaline Truck Performance
 Nitrous Oxide: None
 Transmission: Homebuilt w/stock clutches



Torque Converter: Sun Coast
 Axle Ratios: 3.73
 Lockers: None
 Suspension: Rancho 9000 shocks
 Tires: 285/70R16 BFGoodrich All-Terrain
 What inspired your truck buildup?: "Like to drag race."



Scott Countryman - Bailey, Colorado

'00 [Ford](#) Super Duty F-350crew cab, shortbed, 4WD
 Engine: 5.9L Cummins
 Odometer: 230,000 miles

Fuel Economy: 14 mpg
 Intake: Custom
 Turbos: Garrett GT35 and GT42 turbos
 Exhaust: Custom dual 5-inch
 Lift Pump: FASS 150 and Holley Blue
 Fueling: Dual CP3s
 Injectors: DDP custom
 Intercooler: Hellman
 Programming: VanAaken C5
 Nitrous Oxide: Yes
 Transmission: Allison 1000



Torque Converter: ATS Five-Star
 Axle Ratios: 3.73
 Lockers: Front and rear
 Suspension: ProComp 4-inch lift
 Wheels: Moto Metal
 Tires: 35-inch Dick Cepek
 What inspired your truck buildup?: "Building what you want."



1 | 2 | 3 | 4 | [Next](#)

[Discuss in Our Forums](#)

Bookmark & Share This Article:

SUBSCRIPTION SAVINGS

Save 72%, get 1 year for only \$19.95!



First Name

Last Name

Email

Address

City

State Zip

SUBSCRIBE

The Trucks of Diesel Power Challenge 2008



Nick D'Amico - Sacramento, California
 '02 [Chevy Silverado](#) 2500HD Crew Cab, shortbed, 4WD
 Engine: Duramax LB7
 Odometer: 97,000 miles
 Fuel Economy: "Poor"
 Intake: AFE
 Turbo: ATS Aurora 5000
 Exhaust: RDL headers and MBRP stack
 Lift Pump: Nicktane
 Fueling: Industrial Injection CP3 pumps and TTS Dual CP3 kit
 Injectors: TTS
 Intercooler: Sparco

Programming: TTS
 Nitrous Oxide: Custom NX
 Transmission: ATS Extreme and NADP and J&H coolers



Torque Converter: TTS Triple Disc
 Axle Ratios: 3.73
 Lockers: ARB Air Locker front and rear spool
 Suspension: Stock
 Wheels: KMC XD
 Tires: 305/70R17 BFGoodrich All-Terrain
 What inspired your truck buildup?:

"Personal stupidity."



Jeff Dean - Lancaster, Ohio
 '06 Chevy [Silverado](#) 2500HD Regular cab, longbed, 4WD
 Engine: Duramax LBZ
 Odometer: 11,800 miles
 Fuel Economy: 20 mpg
 Intake: Modified stock airbox
 Turbo: Fleece Performance Cheetah 70mm
 Exhaust: JEGS
 Lift Pump: Holley
 Fueling: PPE Dual Fueler CP3s
 Injectors: Stock
 Intercooler: Stock
 Programming: EFI Live and PPE
 Nitrous Oxide: Homebuilt nitrous and DeLuca CNG injection
 Transmission: ATS and Crank It Up Diesel

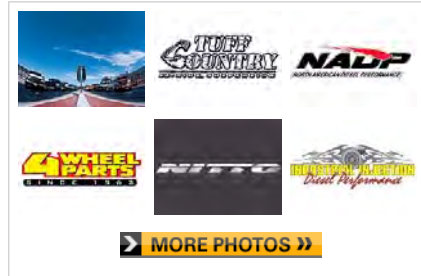


Torque Converter: ATS Five-Star
 Axle Ratios: 3.73
 Lockers: ARB Air Locker
 Suspension: Belltech 3-inch lowering and rear air springs
 Wheels: Stock
 Tires: 285/75R16 Mastercraft AT+2
 What inspired your truck buildup?: "Why not?"

Dodge - Ram 2500 - Zip

Get no-obligation new diesel truck or car invoice pricing online.

Related Photos



Related Articles

2001 Dodge Ram 2500 Cummins - Back To The Future

A 21st-Century Dodge With A 1,237hp Cummins 12-Valve... [more](#)

Dodge Ram 2500 - My Blue Heaven

Six-Speed Dream Dodge... [more](#)

2004 Diesel Hauler Shootout

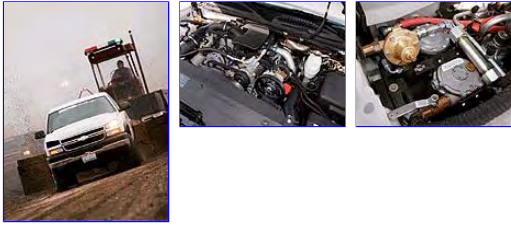
Check out whose got the toughest truck in our comparison between [Ford](#), Dodge, and GMC in this... [more](#)

Diesel Engine OEM - OEM Shootout

[more](#)

More Related Content

- [READ RELATED BLOGS](#)
- [SEE RELATED FORUM POSTS](#)
- [READ RELATED ARTICLES](#)

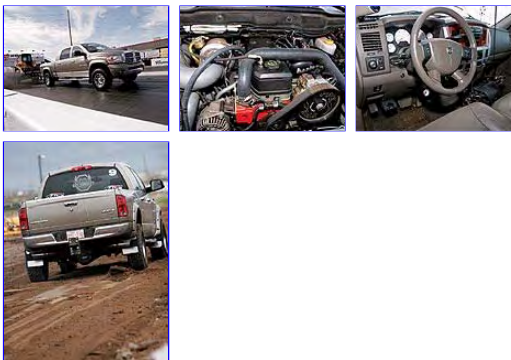


Charr Drever - Medicine Hat, Alberta, Canada

'06 Dodge Ram 3500Mega Cab, shortbed, 4WD
Engine: 5.9L Cummins
Odometer: 31,000 miles
Fuel Economy: 23 mpg
Intake: AFE
Turbos: Industrial Injection twin turbos
Exhaust: MagnaFlow 5-inch
Fueling: PPE Dual Fueler CP3s
Injectors: Industrial Injection custom injectors
Intercooler: Banks
Programming: NADP custom tune
Nitrous Oxide: Dual stage
Transmission: NADP Extreme



Torque Converter: NADP
Axle Ratios: 3.73
Suspension: Stock
Wheels: American Eagle
Tires: 305/65R17 BFGoodrich All-Terrain
What inspired your truck buildup?: "We are Drever Family Racing- it's my turn to feed my need for speed!"



[Discuss in Our Forums](#)

[Prev](#) | [1](#) | [2](#) | [3](#) | [4](#) | [Next](#)

Bookmark & Share This Article:

The Trucks of Diesel Power Challenge 2008

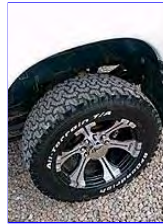


Ron Gaalaas - Fort Saskatchewan, Alberta, Canada
 '04 [Dodge](#) Ram 2500crew cab, shortbed, 4WD
 Engine: 5.9L Cummins
 Odometer: 80,778 miles
 Fuel Economy: 20 mpg
 Intake: AFE
 Turbos: Industrial Injection Phat Shaft 62 and K31
 Exhaust: MBRP
 Lift Pump: FASS
 Fueling: Industrial Injection CP3s with ATS kit
 Injectors: Industrial Injection custom

injectors
 Intercooler: Stock
 Programming: NADP custom tune
 Nitrous Oxide: ZEX 2-stage kit
 Transmission: NADP Heavy Hauler



Torque Converter: NADP custom
 Axle Ratios: 3.73
 Lockers: Stock
 Suspension: Stock
 Wheels: Dick CepekTires: 305/55R20
 BFGoodrich All-Terrain
 What inspired your truck buildup?: "My wife made me!"



Jerimiah Montgomery - Pampa, Texas
 '03 GMC [Sierra](#) 2500HDCrew Cab, shortbed, 4WD
 Engine: Duramax LB7
 Odometer: 118,891 miles
 Fuel Economy: 21 mpg
 Intake: AFE
 Turbo: ATS Aurora 4000
 Exhaust: ATS 4-inch
 Lift Pump: FASS
 Fueling: ATS Dual CP3s
 Injectors: Industrial Injection 90hp nozzles
 Intercooler: Stock
 Programming: PPE Hot+2 E.T.
 Nitrous Oxide: None
 Transmission: ATS

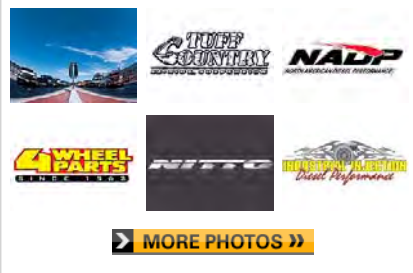


Torque Converter: ATS Five-Star
 Axle Ratios: 3.73
 Lockers: Stock
 Suspension: ProComp front, Rancho rear, and AirLift rear air springs
 Wheels: KMC XD
 Tires: 285/75R16 BFGoodrich All-Terrain
 What inspired your truck buildup?:
 "Being able to spank a new sports car with a 7,500-lb diesel truck and seeing the look on the driver's face when you fly by them on the track."

Dodge - Ram 2500 - Zip

Get no-obligation new diesel truck or car invoice pricing online.

Related Photos



[MORE PHOTOS >>](#)

Related Articles

[2001 Dodge Ram 2500 Cummins - Back To The Future](#)

A 21st-Century Dodge With A 1,237hp Cummins 12-Valve... [more](#)

[Dodge Ram 2500 - My Blue Heaven](#)

Six-Speed Dream Dodge... [more](#)

[2004 Diesel Hauler Shootout](#)

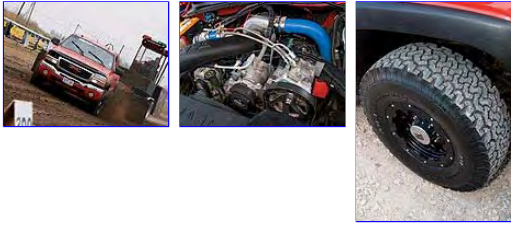
Check out whose got the toughest truck in our comparison between Ford, Dodge, and GMC in this... [more](#)

[Diesel Engine OEM - OEM Shootout](#)

[more](#)

More Related Content

- [READ RELATED BLOGS](#)
- [SEE RELATED FORUM POSTS](#)
- [READ RELATED ARTICLES](#)



Ernest Schwartz - Bonners Ferry, Idaho

'02 [Ford](#) Super Duty F-350 crew cab, shortbed, 4WD
Engine: 7.3L Power Stroke
Odometer: 116,000 miles
Fuel Economy: 14 mpg
Intake: AFE
Turbos: Compound turbos
Exhaust: 6-inch dual stacks
Lift Pump: Wide Open Performance



Injectors: Industrial Injection Stage 5
Intercooler: Hypermax
Programming: TS Performance
Transmission: Brian's Truck Shop
Torque Converter: Brian's Truck Shop
Axle Ratios: 3.73
Lockers: Stock
Suspension: Revtek 4-inch lift
Wheels: American Racing
Tires: 285/75R16 Toyo Open Country M/T
What inspired your truck buildup?: "A love for sled pulling and the lack of decent 7.3Ls."



[Prev](#) | [1](#) | [2](#) | [3](#) | [4](#) | [Next](#)

[Discuss in Our Forums](#)

Bookmark & Share This Article:

SUBSCRIPTION SAVINGS
Save 72%, get 1 year for only \$19.95!



First Name
 Last Name
 Email
 Address
 City
 State Zip

SUBSCRIBE

The Trucks of Diesel Power Challenge 2008



Tyler Scheers - Fort McMurray, Alberta, Canada
 '05 Ford Super Duty F-350 crew cab, shortbed, 4WD
 Engine: 6.0L Power Stroke
 Odometer: 113,711 miles
 Fuel Economy: 15 mpg
 Intake: AFE
 Turbos: Industrial Injection custom 62-

70 and S400 compound



Exhaust: MBRP 4-inch
 Lift Pump: FASS
 Injectors: Hypermax 340cc
 Intercooler: Banks
 Programming: SCT custom tune by Innovative Diesel
 Nitrous Oxide: 2-stage
 Transmission: NADP Race
 Torque Converter: NADP

Axle Ratios: 3.73



Lockers: Stock
 Suspension: 2-inch front leveling kit
 Wheels: RPM
 Tires: 305/75R20 BFGoodrich All-Terrain
 What inspired your truck buildup?: "Riding around in my buddy's done-up Ford for too many years spoiled me."



Derek Temple - Alliance, Nebraska
 '06 GMC Sierra 2500HD crew cab, shortbed, 4WD
 Engine: Duramax LBZ
 Odometer: 45,000 miles
 Fuel Economy: 18 mpg
 Intake: AFE
 Turbo: Stock
 Exhaust: MBRP 5-inch into custom 6-inch stack
 Lift Pump: FASS



Fueling: Stock CP3
 Injectors: Stock
 Intercooler: Stock
 Programming: PPE Hot+2 E.T. and TS Performance MP-8
 Nitrous Oxide: None
 Transmission: Rapid Diesel
 Torque Converter: ATS Five-Star

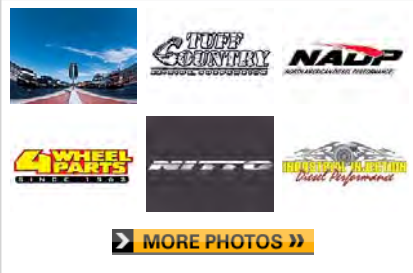


Axle Ratios: 3.73
 Lockers: Stock
 Suspension: Stock
 Wheels: Stock
 Tires: 255/85R16 Wild Spirit AT
 What inspired your truck buildup?: "Watching diesel sled pulls as a kid and reading Diesel Power magazine."

Dodge - Ram 2500 - Zip

Get no-obligation new diesel truck or car invoice pricing online.

Related Photos



[MORE PHOTOS >>](#)

Related Articles

[2001 Dodge Ram 2500 Cummins - Back To The Future](#)

A 21st-Century Dodge With A 1,237hp Cummins 12-Valve... [more](#)

[Dodge Ram 2500 - My Blue Heaven](#)

Six-Speed Dream Dodge... [more](#)

[2004 Diesel Hauler Shootout](#)

Check out whose got the toughest truck in our comparison between Ford, Dodge, and GMC in this... [more](#)

[Diesel Engine OEM - OEM Shootout](#)

[more](#)

More Related Content

- [READ RELATED BLOGS](#)
- [SEE RELATED FORUM POSTS](#)
- [READ RELATED ARTICLES](#)



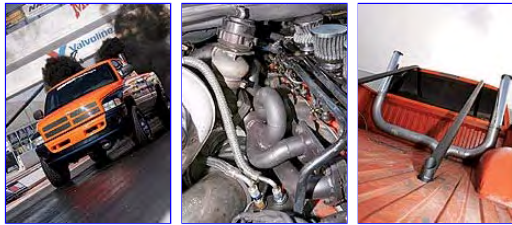
Chris Werner - Redding, California

'01 Dodge Ram 2500quad cab, shortbed, 4WD
Engine: 5.9L Cummins 12-valve swap
Odometer: 170,503 miles
Fuel Economy: 16 mpg
Intake: AFE
Turbos: Turbo Engineering turbos built by Jefferson State Diesel
Exhaust: Jefferson State Diesel header w/custom 5-inch stacks
Lift Pump: FASS
Fueling: Dynamite Diesel Performance 12mm P-pump
Injectors: Dynamite Diesel Performance
Intercooler: Stock
Programming: None



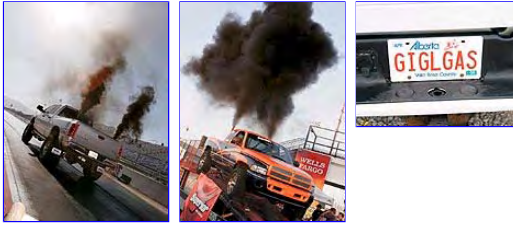
Nitrous Oxide: Yes
Transmission: 47RE by J&H Performance
Torque Converter: Spec-Rite
Axle Ratios: 3.55
Lockers: ARB Air Lockers front and rear
Suspension: Lowered
Wheels: MB Motoring
Tires: 305/50R20 Toyo open Country

A/T
What inspired your truck buildup?: "Missed my first Dodge diesel and the need for speed."



More Challenges To Come

Don't miss our full event coverage of the 2008 Diesel Power Challenge coming next month in the September 2008 issue of Diesel Power magazine. It's the only place you'll find exclusive photos of these diesel trucks in action. Look for it on sale at your local newsstand on Tuesday, August 5th.



[Discuss in Our Forums](#)

[Prev](#) | [1](#) | [2](#) | [3](#) | [4](#)

Bookmark & Share This Article:

SUBSCRIPTION SAVINGS

Save 72%, get 1 year for only \$19.95!



First Name

Last Name

Email

Address

City

State Zip

SUBSCRIBE