



ATS
BilletPROOF
CHANNEL PLATES

ASSEMBLY/INSTALLATION
INSTRUCTION MANUAL



68-RFE BILLETPROOF CHANNEL PLATE KIT

2019-CURRENT RAM 6.7L C.R. CUMMINS
DIESEL

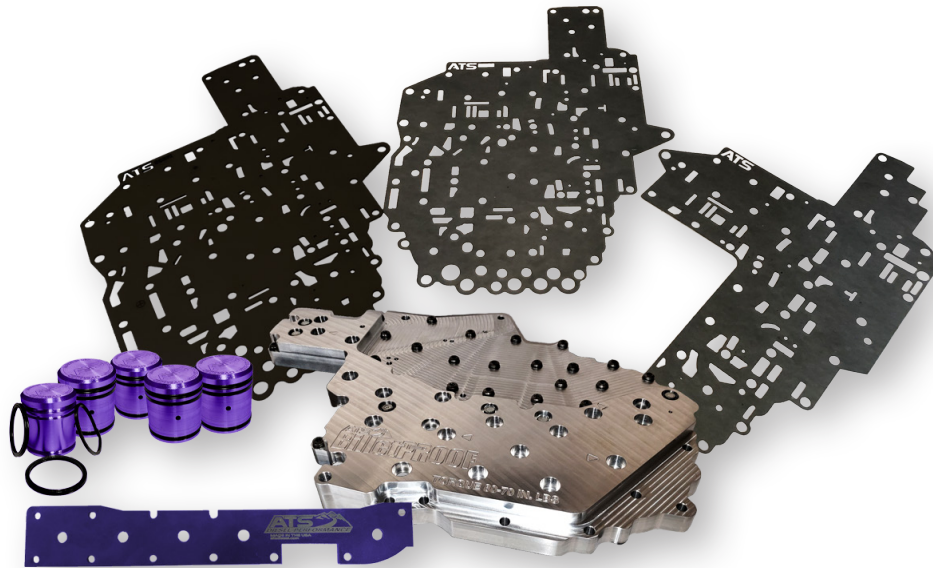
W/ BLUE SOLENOID PACK (not included)



ATS BilletPROOF CHANNEL PLATES

Installation Manual v1.0:

p/n: 303-007-2464 · 68-RFE Billet Channel Plate Kit
2019-2023 Ram 6.7L CR Cummins w/ Blue Solenoid Pack (not included)



Please read all instructions before attempting installation.

Thank you for purchasing the ATS BilletPROOF Billet Channel Plate. This kit enables the transmission to mechanically and hydraulically produce a higher line pressure than the factory transmission setup is capable of. The factory transmission is only capable of a maximum line pressure of 160 PSI in all forward gears. This kit will allow the transmission to produce up to 295 PSI when commanded by the ATS Co-Pilot transmission control module (not included) once both parts are installed.



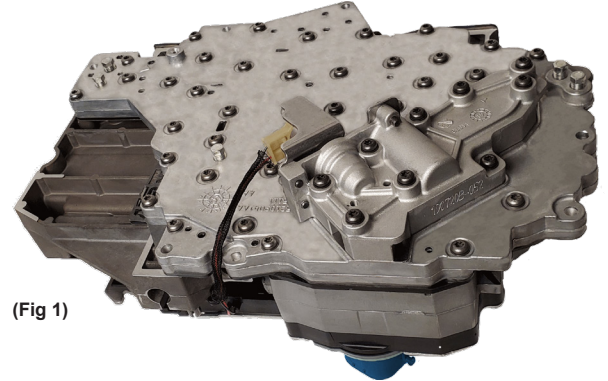
NOTE: If this kit is installed and only controlled by the factory transmission control module (TCM), there will be little to no pressure increase. The factory hydraulic calibration limits pressure to approximately 160 PSI. If this kit is installed and used with the factory TCM calibration it will still function as stock. While it is not necessary to install this kit to get the benefits of the ATS CoPilot™ Transmission Management Computer, it will increase the performance of the Co-Pilot to its fullest potential and allow the transmission to safely handle power levels over stock.

BILL OF MATERIALS

1. (1) ATS Billet Channel Plate (303-006-2326)
2. (1) Separator Plate (303-032-2380)
3. (1) Front ATS gasket (303-004-2326)
4. (1) Back ATS gasket (303-005-2326)
5. (2) Check Balls (303-20)
6. (1) Accumulator Plate (303-030-2326)
7. (7) Accumulator Bolts (001-61)
8. (5) ATS Billet Accumulator Pistons (303-021-2326)

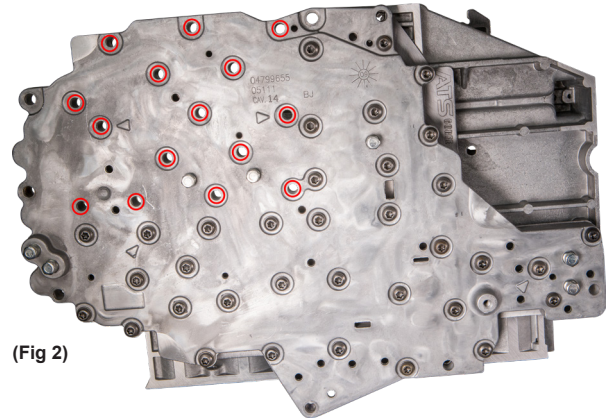
INSTRUCTIONS

1. Remove the transmission pan, then unbolt the valve body assembly and remove it from the vehicle. (Fig 1)



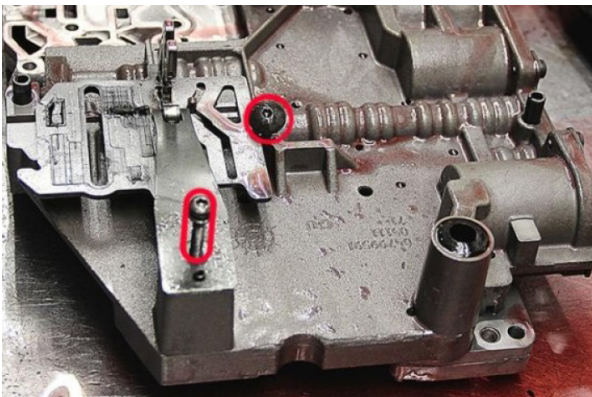
(Fig 1)

2. Remove the highlighted bolts to release the solenoid pack from the valve body. Carefully remove the solenoid pack from the valve body and set aside. (Fig 2)

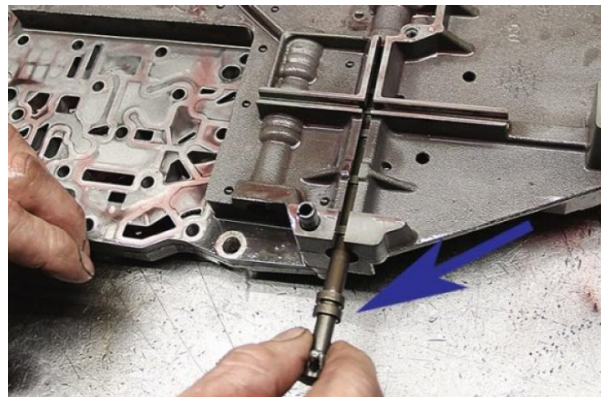


(Fig 2)

3. Remove the two highlighted bolts (Fig 3a) and then remove the shift selection assembly. Carefully remove the pin. (Fig 3b)

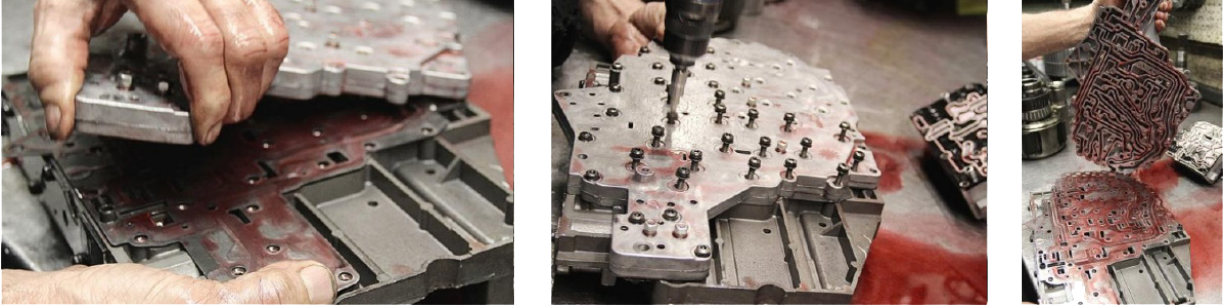


(Fig 3a)



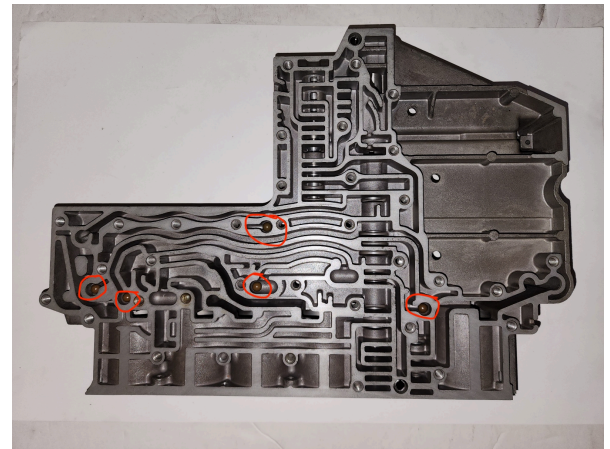
(Fig 3b)

4. Turn over the valve body and continue to remove all remaining bolts. Carefully separate the valve body exposing the separator plate. (Fig 4)



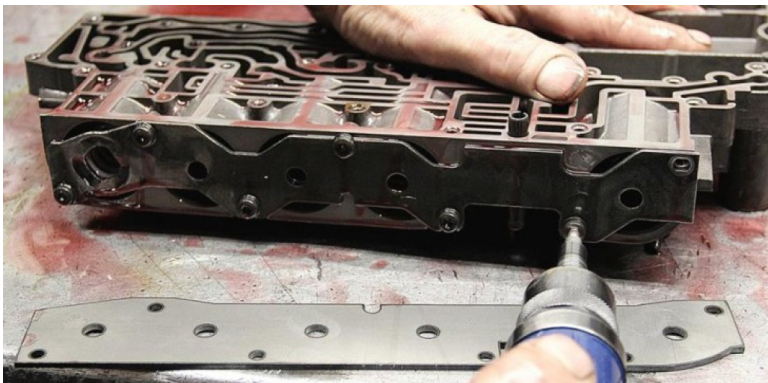
(Fig 4)

5. Inspect the valve body to determine if all five check balls are in their respective locations. If all five are in their correct places, do not add any of the provided check balls (Fig 5).



(Fig 5)

6. Keeping the opened valve body on its side, remove the bolts from the stock accumulator plate. Remove the springs and factory accumulator pistons from the valve body. **Take notice of where the springs come from to make sure they go back in the same hole.** Lube the seals on the ATS Billet Accumulator Pistons and insert into cylinders of valve body. Insert springs back into cylinders. Install the reinforced ATS Accumulator Plate that is provided in the kit. Be sure to use the provided screws as the stock screws are not long enough to ensure a secure fitment. (Fig 6)



(Fig 6)





ATTENTION!

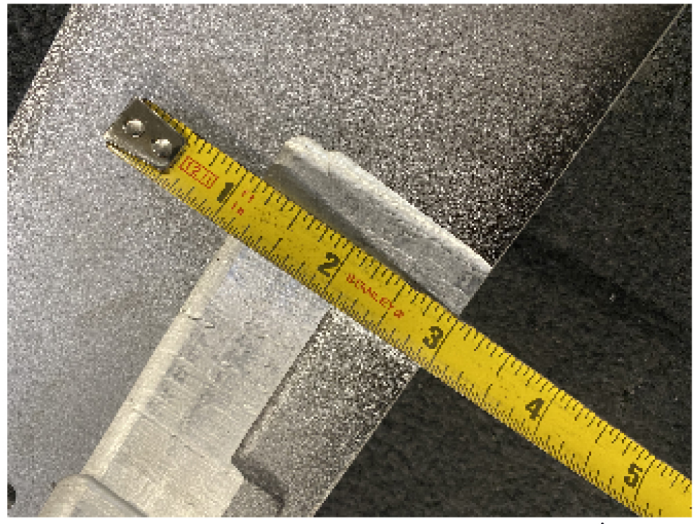
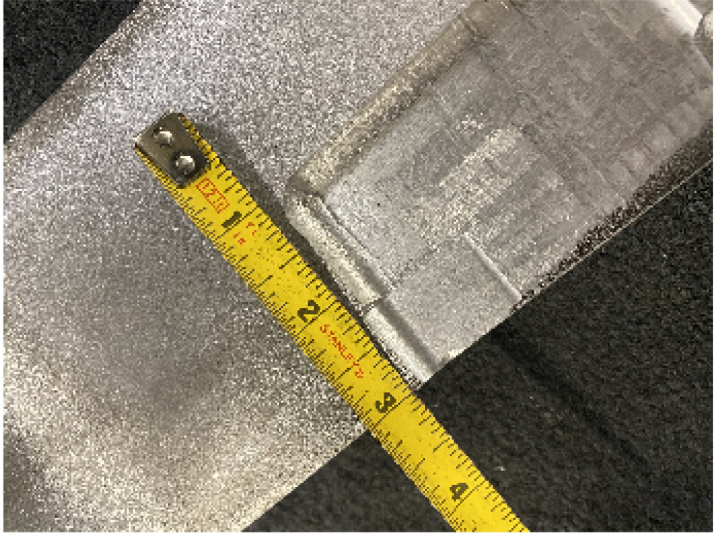
IF YOU INSTALLED AN ATS DEEP PAN EXTRA CAPACITY TRANSMISSION PAN PRIOR TO 2020, YOU MAY NEED TO MODIFY YOUR TRANSMISSION PAN IN ORDER TO ENSURE PROPER FITMENT WITH THE ATS BILLET CHANNEL PLATE KIT.

The following centerfold serves as both a template and instructions for modification to your Deep Pan transmission pan. You will need either a die grinder or an angle grinder to perform this modification.



DeepPANS

ATS Deep Pan Extra Capacity
Transmission Pan
P/N: 301-900-2326





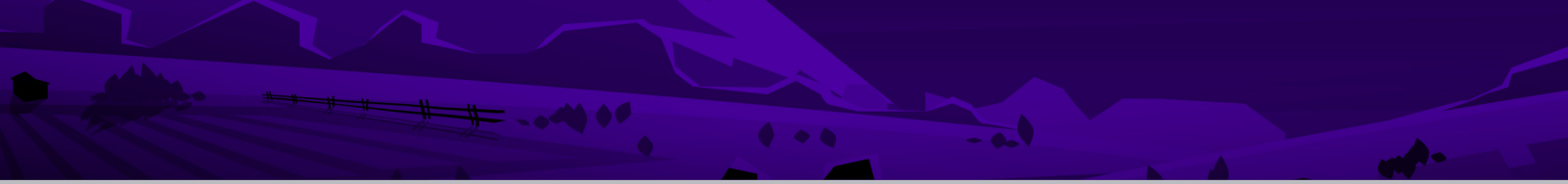
WHEN USING AN ATS BILLETPROOF CHANNEL PLATE WITH AFTERMARKET DEEP TRANSMISSION PAN, SOME MODIFICATIONS TO THE PAN ARE NEEDED.

THE ATS DEEP TRANSMISSION PAN (p/n: [301-900-2326](#)) HAS BEEN UPDATED IN 2019 WITH NEW PANS NOT NEEDING THESE MODIFICATIONS.



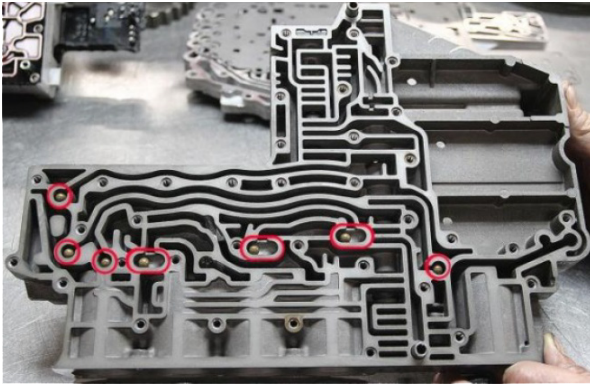
INSTRUCTIONS

CUT OUT THE PAPER TEMPLATE AND ALIGN ON TRANSMISSION PAN. USING DIE GRINDER OR ANGLE GRINDER, CAREFULLY CUT PAN WHERE ARROWS POINT ON TEMPLATE. DEPTH OF CUTS ARE SHOWN IN IMAGES. BE SURE NOT TO CUT TOO MUCH INTO PAN WHICH COULD CAUSE LEAKS.

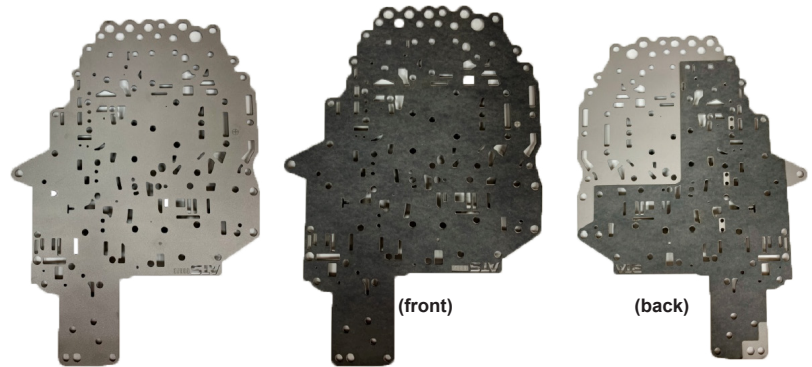


PAGE LEFT
INTENTIONALLY
BLANK

7. Ensure that all seven (7) check balls (*Fig 7a*) are in place and then install the ATS 68RFE separator plate with front and back gaskets. Line up the ATS logo on the gaskets with the logo on the separator plate. (*Fig 7b*)

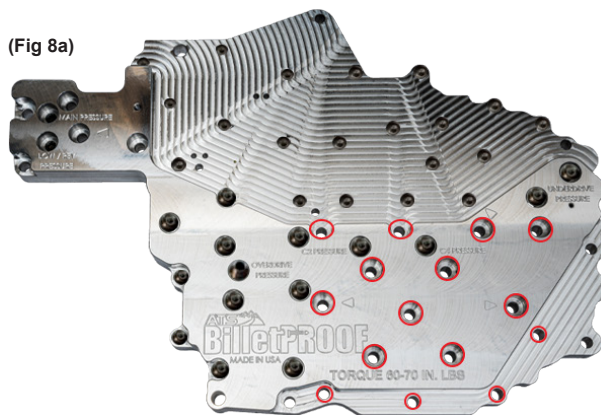


(Fig 7a)

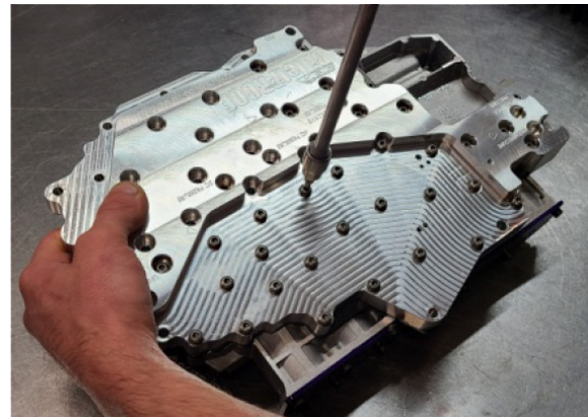


(Fig 7b)

8. Place the ATS Billet Channel Plate back in place of the original channel plate, making sure the 3 parts fit together without a binding or rocking action before installing the bolts, next tighten down all the bolts shown. (*Fig 8a*) Remember to tighten down the plate working from the inside out using a hand wrench, then torque the bolts in the same sequence to 60-70 inch/lbs. (*Fig 8b*)

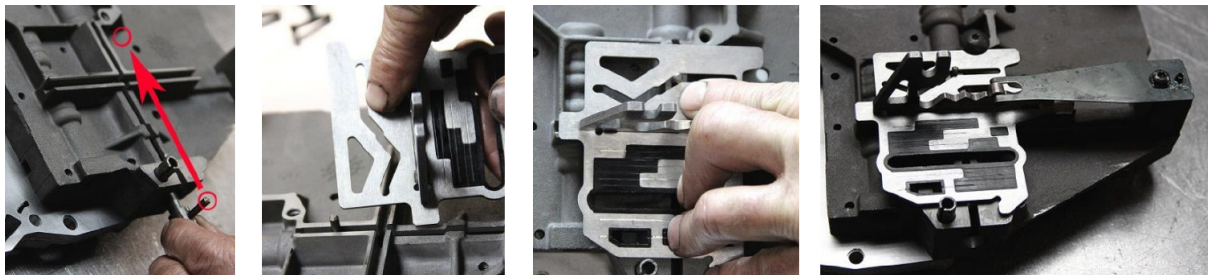


(Fig 8a)



(Fig 8b)

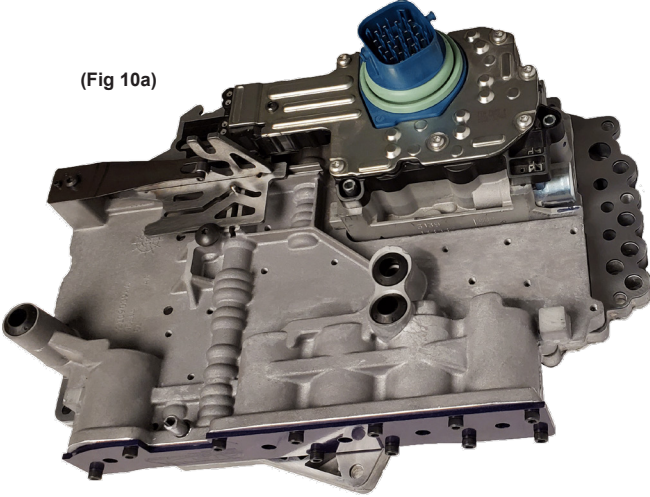
9. Reinstall the shift selection assembly. Next, reinstall the pin and push it all the way up to the designated position. Place the plate on the valve body. (*Fig 9*) Place the selector spring in place and fasten down both items back in place.



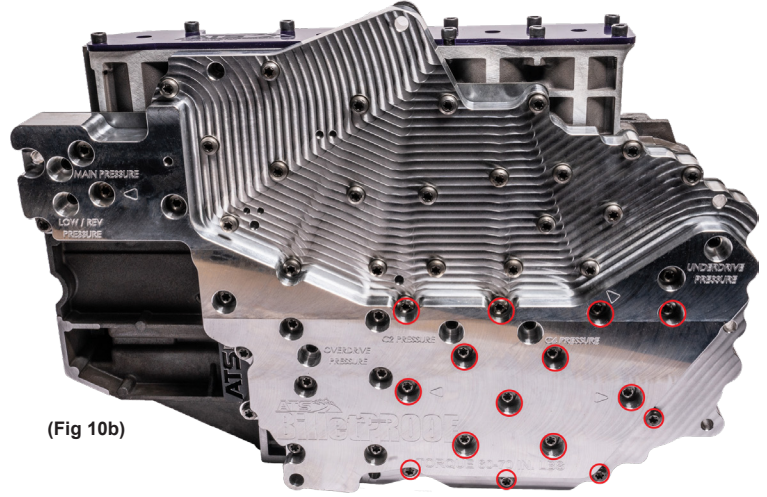
(Fig 9)

- Put the solenoid pack back on the valve body (Fig 10a) and tighten each of the fasteners to 60-70 inch/lbs, starting with the inside and working your way out. (Fig 10b)

(Fig 10a)



(Fig 10b)



- Install the valve body back in the transmission. To prevent leaks from the transmission pan, torque the bolts to 65 in./lbs, and take the truck for a quick drive after filling it ONLY with ATF+4. After letting the transmission warm up, retorque the pan bolts to the same 65 in./lbs. spec. (It is common for the pan bolts to become loose-fitting immediately after reinstallation, and the metal has been heated.)



IMPORTANT! Cross leaks in your valve body will cause pressure switch rationality codes! Take your time, make sure any and all sealing surfaces are flush and clean of debris, and torque the fasteners using the proper methods and torque specs. Some valve bodies develop warping issues as they age, causing cross leaks and pressure switch rationality codes. If you are having constant pressure switch rationality codes, a new valve body may be needed if the metal has been warped.

NOTES



LIMITED WARRANTY STATEMENT:

ATS Diesel Performance warrants the original purchaser that any parts purchased shall be free from defects in material and workmanship. ATS Diesel Performance is the warrantor of this product, in the event this product is purchased from a distributor or retailer other than ATS Diesel Performance the customer must contact ATS Diesel Performance for any warranty concerns, not the purchasing dealer. A defect is defined as a condition that would render the product inoperable. This warranty does not cover deteriorating of plating, paint or any other coating. ATS liability is limited to the repair or replacement, at ATS's option, of any warrantable product returned prepaid with a complete service history and proof of purchase to the factory. A valid proof of purchase is a dated bill of sale. Repaired or replaced, product will be returned to the customer, freight collect on a like-for-like part number basis. Accepted warranty units, which have been replaced, become the sole property of ATS.

A Return Product Authorization number obtained in advance from an ATS customer service representative must accompany products returned for warranty determination. ATS will be the final authority on all warranty decisions.

This warranty shall not apply to any unit which has been improperly stored or installed, subjected to misapplication, improper operating conditions, accidents, or neglect; or which has been improperly repaired, altered or otherwise mistreated by the owner or his agent.

This warranty shall terminate at the end of 12 months in service with the original user. Labor cost incurred by the removal and replacement of an ATS product, while performing warranty work, will be the responsibility of the vehicle owner; in no case does the obligation of ATS Diesel Performance exceed the original purchase price of the product as indicated on the original bill of sale.

Except as set forth in this warranty, ATS disclaims any implied warranty, including implied warranties of merchantability and fitness for a particular purpose. ATS also disclaims any liability for incidental or consequential damages including, but not limited to, repair labor, rental vehicles, hotel costs or any other inconvenience costs. This warranty is in lieu of all warranties or guarantees, either expressed or implied, and shall not extend to any customer or to any person other than the original purchaser residing within the boundaries of the continental US or Canada.



NOTE: We strive to make our instructions as clear and complete as possible. To achieve this, our instructions are under constant construction. We encourage you to visit our Technical Support Website (<http://www.atsdiesel.com/ATSWebsite/Technical.asp>) to check for the most up-to-date manuals and diagrams as well as other information. If you have any suggestions as to how we can improve this installation manual, let us know at: suggestions@atsdiesel.com



CONTACT US

ATS Diesel Performance, Inc.
5293 Ward Rd.
Arvada, CO 80002

Toll Free: (800) 949-6002

Local: (303) 431-7973

Fax: (303) 431-0135

Website: www.atsdiesel.com

Email: info@atsdiesel.com



TROUBLESHOOTING:

Thank you for purchasing the ATS BilletProof Channel Plate Kit for the 68RFE transmission. This manual is to assist you with your installation and operation of the unit. Please use the contact information to the right for assistance with any questions regarding this installation. If you are installing this kit for a customer, please pass this manual on to your customer for future reference.

PATENTED INNOVATION MEANS MORE POWER TO THE GROUND.

ATS WARRANTY
5yr/500k

FIVE STAR
TORQUE CONVERTER

TripleLOK™
TORQUE CONVERTER



ATS
DIESEL PERFORMANCE
ATSDiesel.com



Proudly manufactured in Arvado, Colorado, U.S.A.